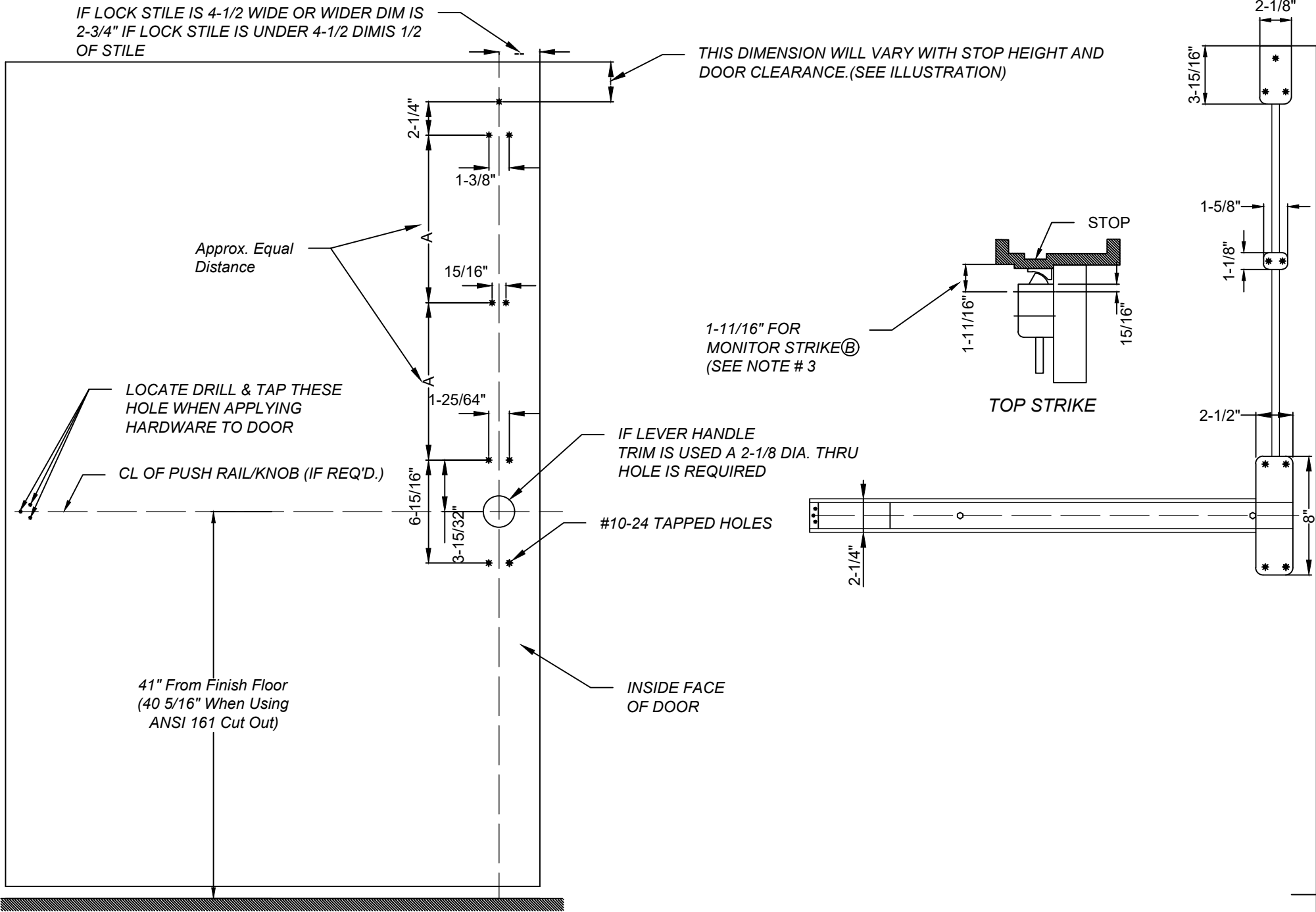


IF LOCK STILE IS 4-1/2 WIDE OR WIDER DIM IS 2-3/4" IF LOCK STILE IS UNDER 4-1/2 DIM IS 1/2 OF STILE

THIS DIMENSION WILL VARY WITH STOP HEIGHT AND DOOR CLEARANCE. (SEE ILLUSTRATION)



Approx. Equal Distance

LOCATE DRILL & TAP THESE HOLE WHEN APPLYING HARDWARE TO DOOR

CL OF PUSH RAIL/KNOB (IF REQ'D.)

41" From Finish Floor
(40 5/16" When Using ANSI 161 Cut Out)

IF LEVER HANDLE TRIM IS USED A 2-1/8 DIA. THRU HOLE IS REQUIRED

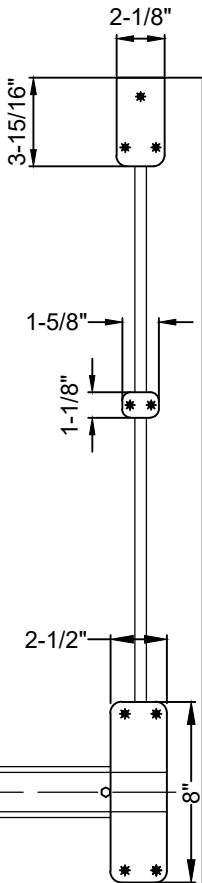
#10-24 TAPPED HOLES

INSIDE FACE OF DOOR

1-11/16" FOR MONITOR STRIKE® (SEE NOTE # 3)

TOP STRIKE

2-1/4"



The illustration and technical description in this cut sheet is current as of the date in version date on the right. Cal-Royal Product reserves the right to, and may, on occasions, make changes and/or improvements in designs and dimensions without prior notice.

	6605 Flotilla Street City of Commerce CA 90040 USA Tel.# (323) 888-6601 FAX # (323) 888-6699 WEB SITE: CAL-ROYAL.COM Email: sales@cal-royal.com		ITEM NO.	DESCRIPTION :	NOT TO SCALE	UNIT	Prepared By:	DATE	DWG. NO.
	ALBR7760V	SURFACE VERTICAL ROD EXIT DEVICE LESS BOTTOM ROD	PAGE 1 OF 1	PRIMARY DIMENSION SHOWN IN INCHES	BBT / ADG / CVL	08/13/2024	EDT-4134-08/24-1 of 1		
								REV: Ver-01	