

N-77CVR & N-F77CVR Series

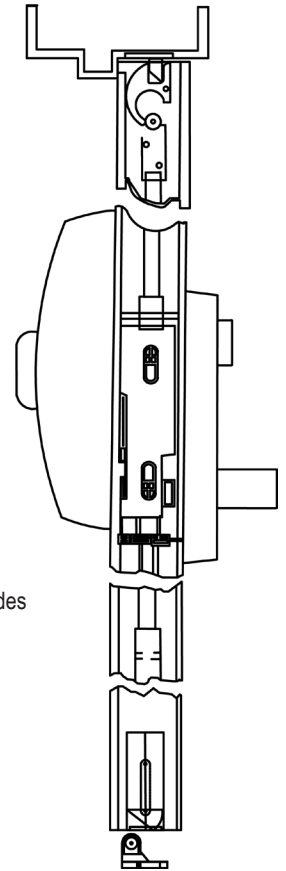
Optional Less Bottom Rod (LBR)

Grade 1 Concealed Vertical Rod Exit Device for Wood & Metal Doors



***Americans with Disability Act (ADA) compliant
5 lbs opening force on ADA Series only**

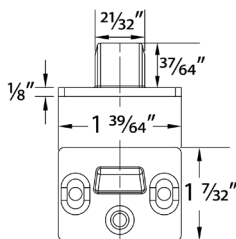
***Refer to the Price List for Stock Sizes and Finishes**



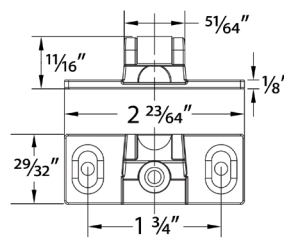
Specifications

LBR (Optional).....	No bottom strike. Free access for wheel chairs, stretchers and carts which eliminates tripping potential and disfiguration of floors due to dragging of bottom bolts.
For Doors.....	Wood or Metal. 1 3/4" (44.5 mm) minimum thickness 4 1/2" (114 mm) minimum stile width
Top & Bottom Chassis.....	Steel Material
Chassis Cover.....	Zinc Material
Mounting.....	Furnished standard with wood and machine screws
End Cap.....	Stainless Steel Construction
Hand.....	Handed. Easily field reversible. Specify at time of order LHR or RHR for convenience
ANSI Standard.....	A156.3, Grade 1
Strikes.....	N-260 & N-265 (Steel), 233 (Stainless Steel)
Fire Exit Hardware.....	N-F77CVR Series for fire exit hardware for all types of 8' x 10' double doors, LBR Series for fire exit hardware for all types of 8' x 10' double doors for up to 3 hour fire labeled installations. Conforms to standards UL10C and UBC 7-2-1997 codes
Rail Height.....	Specify door opening and mounting height of center line of rail when ordering a Vertical Rod Exit Device 41" from floor
Trim.....	See Trim Designs section
Electronic Functions.....	(ELR) Electrical Latch Retraction and RX & LX Signal Switch available
Alarm.....	Prefix "NALRM" before PART #
Dogging Feature.....	Cylinder dogging available for non-rated applications
Anti-Microbial Coating.....	Available on US32D only. Use part # ANTB-EXIT

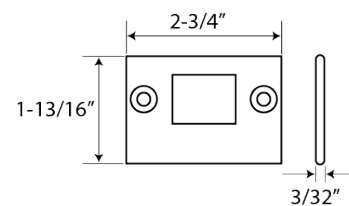
MODEL SIZE	ACTUAL LENGTH	MAX CUT DOWN	DOOR SIZE
N-77CVR3684, N-F77CVR3684, N-77CVR3696, N-F77CVR3696, N-77CVR36120, N-F77CVR36120	32"	6"	30" to 36" door width
N-77CVR4896, N-F77CVR4896, N-77CVR48120, N-F77CVR48120	44"	10"	36" to 48" door width



N-260 TOP STRIKE
 • Surface Mount
 • Steel Material



N-265 BOTTOM STRIKE
 • Surface Mount
 • Steel Material



233 BOTTOM STRIKE
 • Flush Mounting Stainless Steel
 • Furnished with expansion shields
 • Mortised into floor